



Tampa Bay Network To End Hunger

Hunger Gap Map Instructions

January 2020

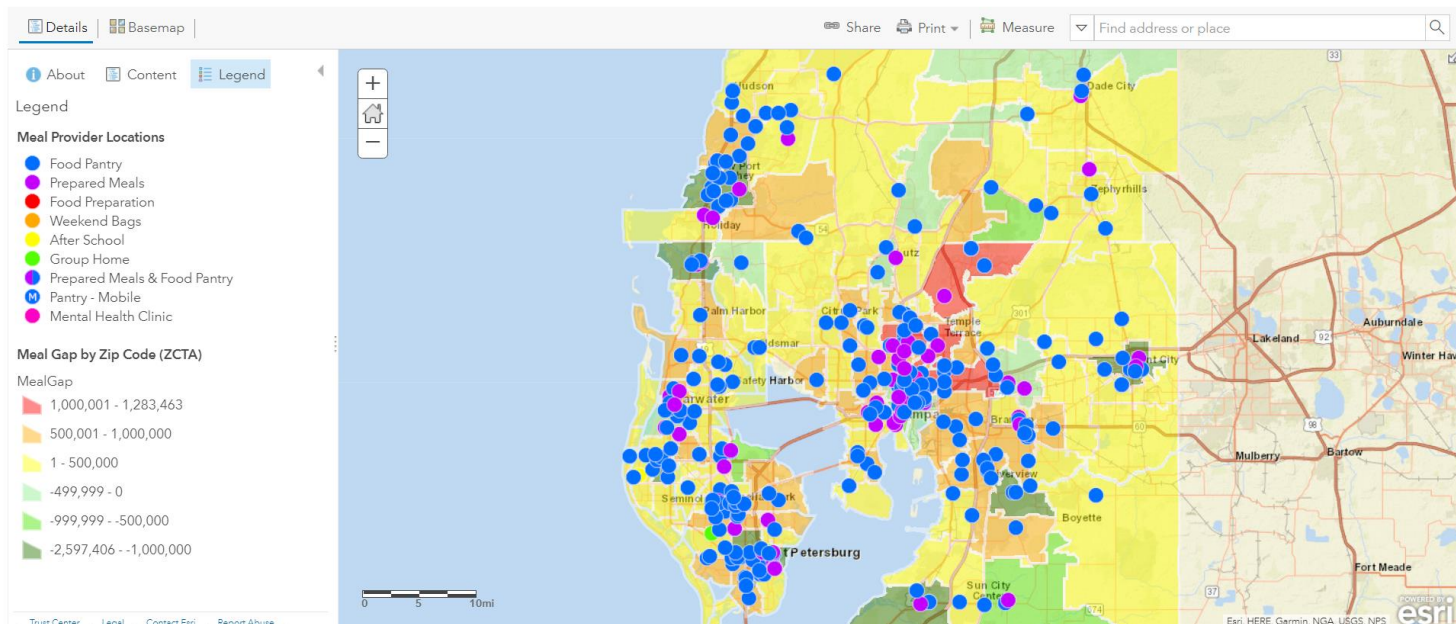
How to Access the Map

1. Visit <http://networktoendhunger.org/map/>.
2. Click the 'View Hunger Gap Map' button.
3. It may ask you to download the Silverlight plug-in, if so, click 'Run'.
4. This will allow you to view the TBNEH Hunger Gap Map on www.arcgis.com.

View Hunger Gap Map

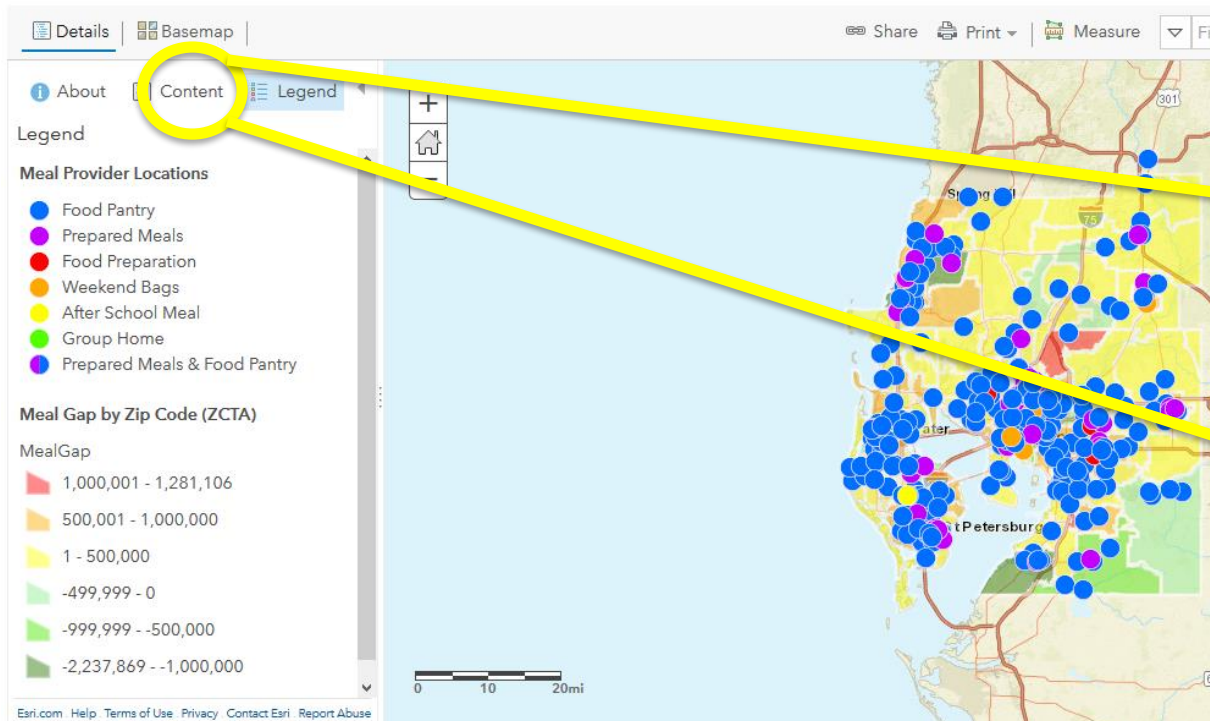
ArcGIS ▾ TBNEH Hunger Gap

Modify Map Sign In



Getting Started

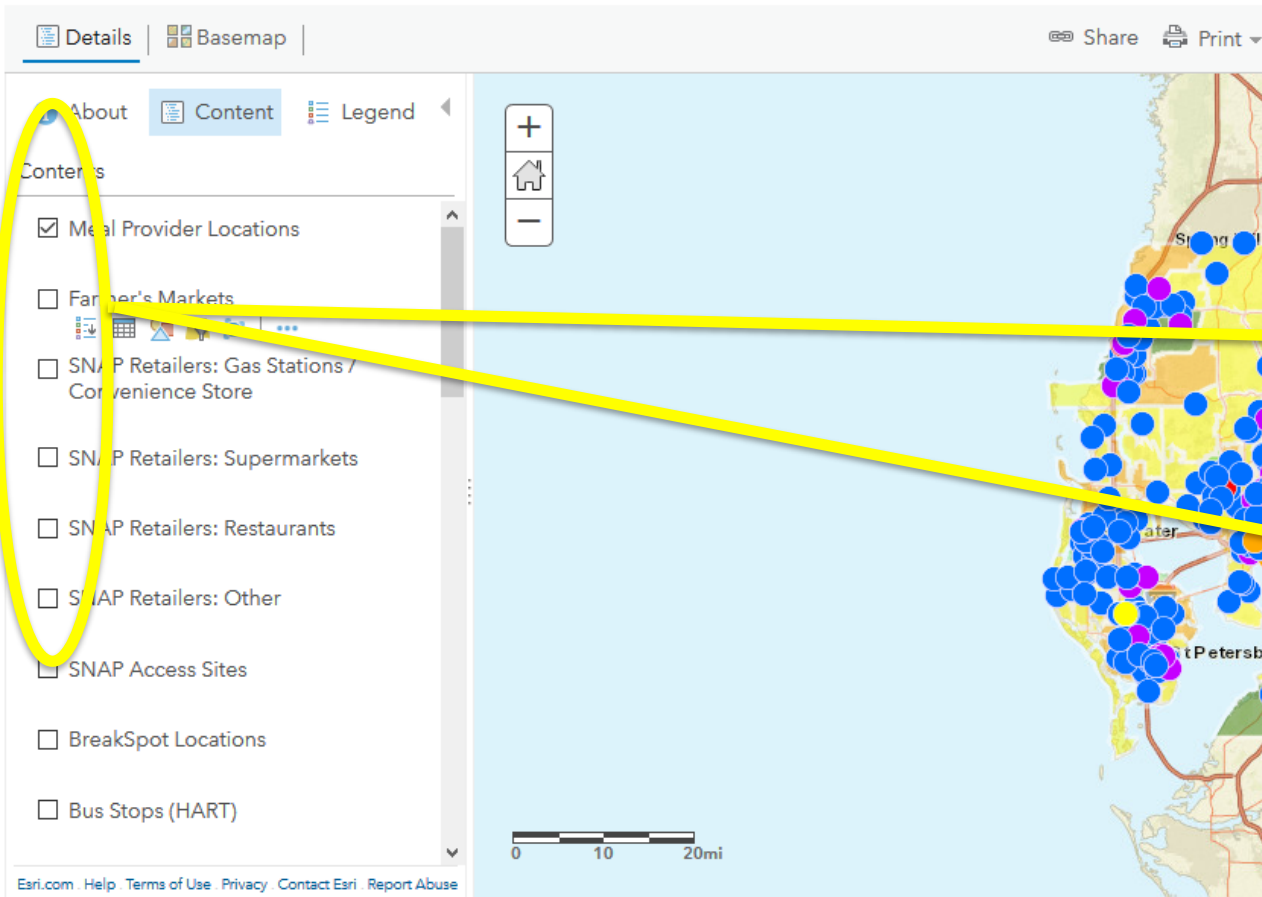
ArcGIS ▾ TBNEH Hunger Gap



Once you have opened the map, click the 'Content' tab to access map layers.

Map Layers & Content

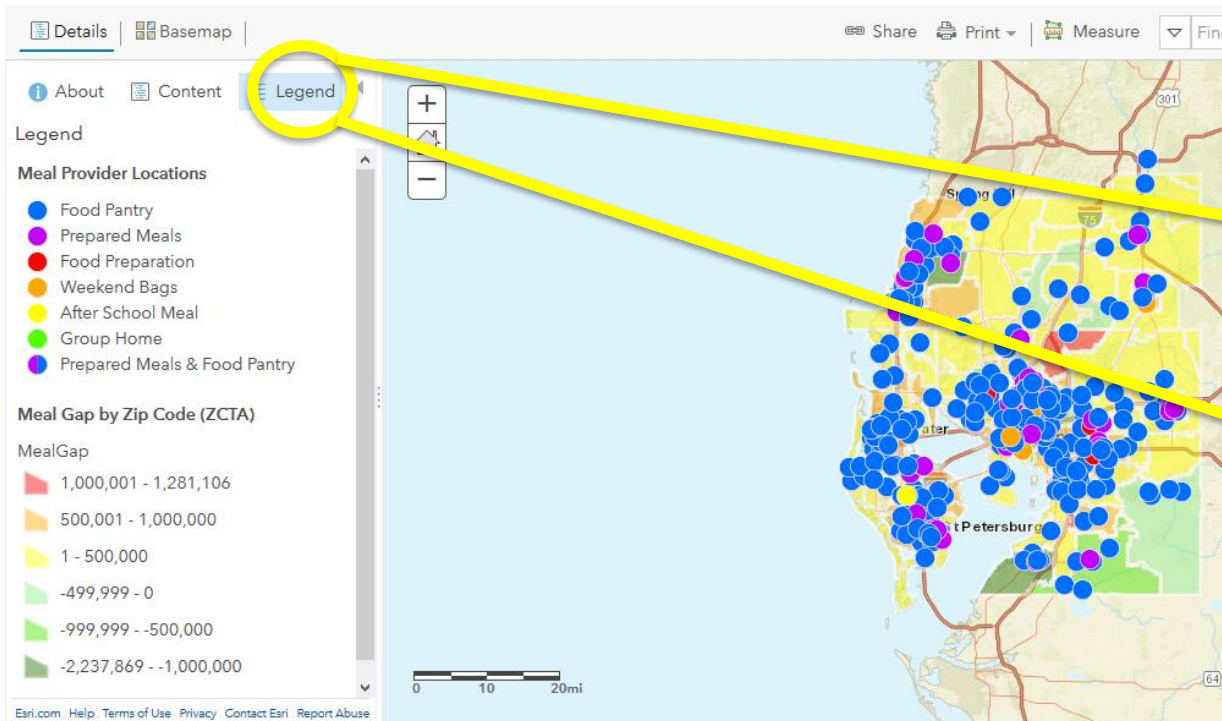
ArcGIS ▾ TBNEH Hunger Gap



Check boxes
on/off to
select which
layers you
wish to view.

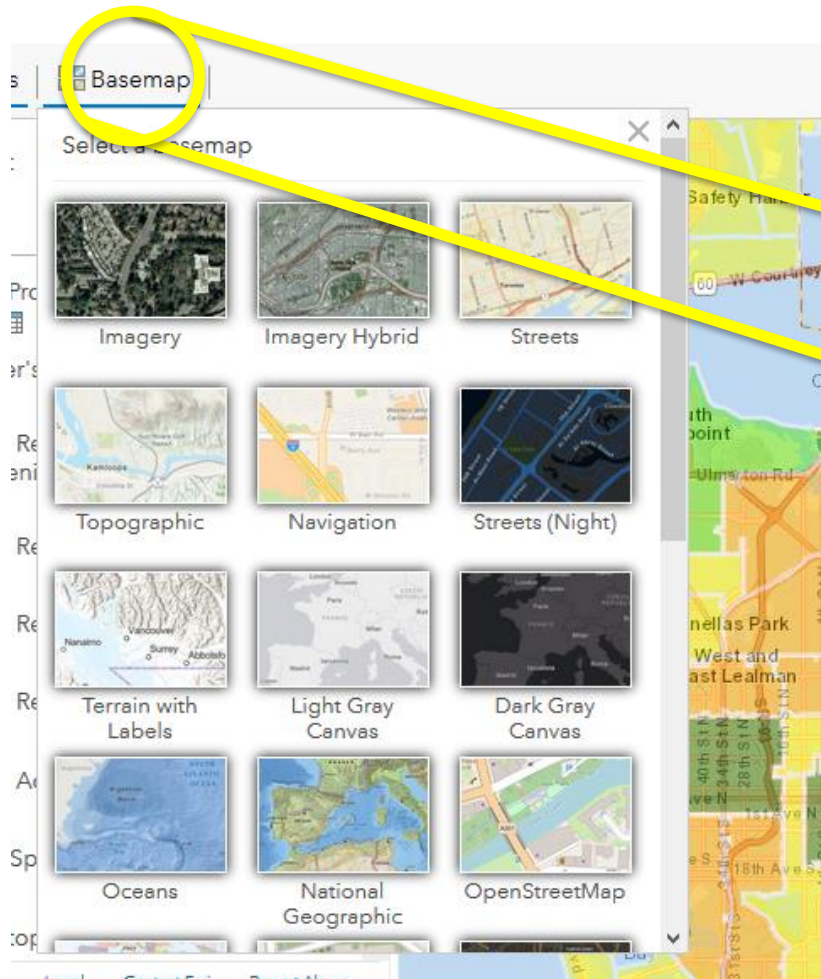
Map Legend

ArcGIS ▾ TBNEH Hunger Gap



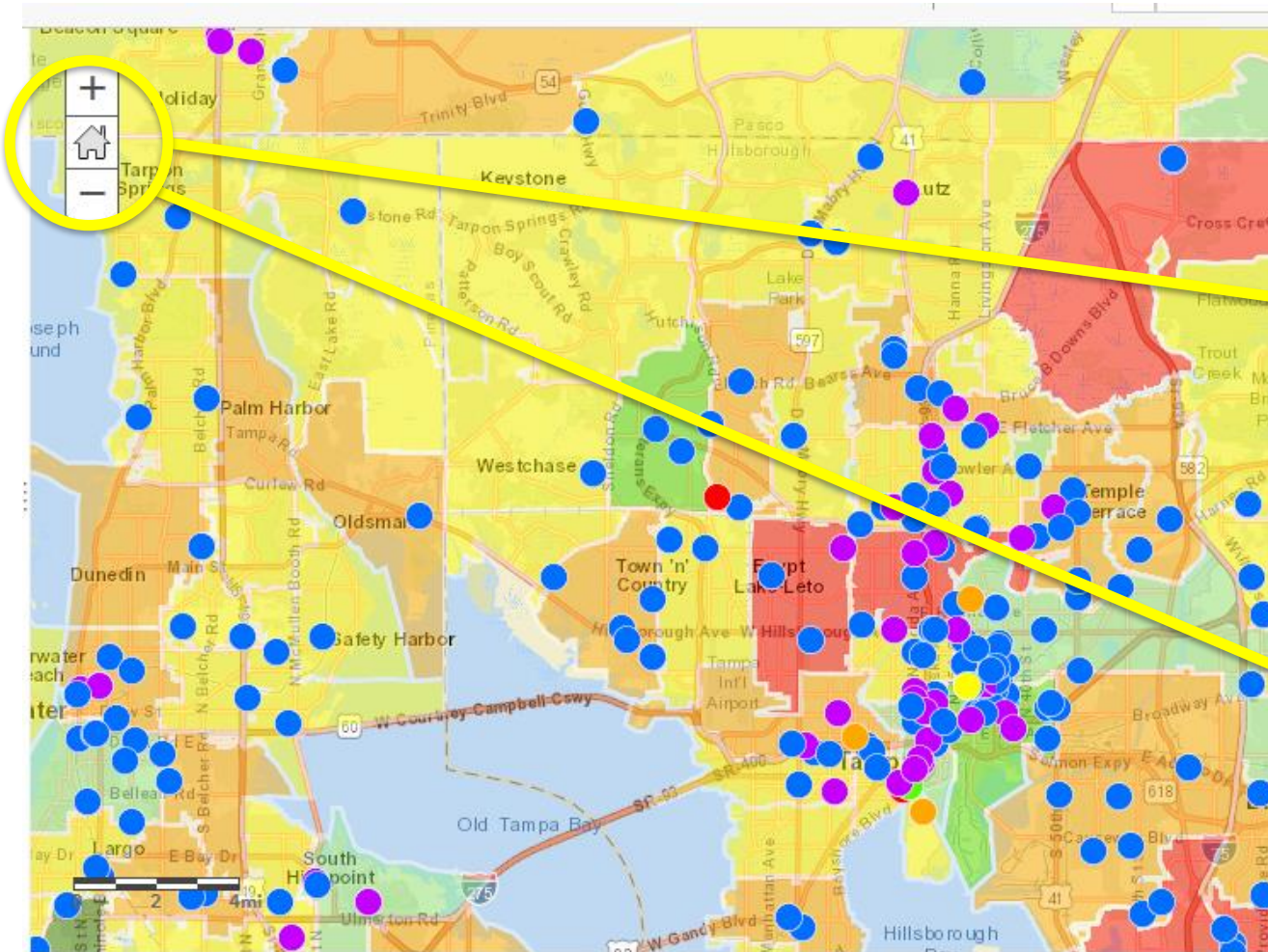
Click the 'Legend' tab to view the content selections and review information.

Base Map



If desired, click the 'Basemap' tab to choose map style options.

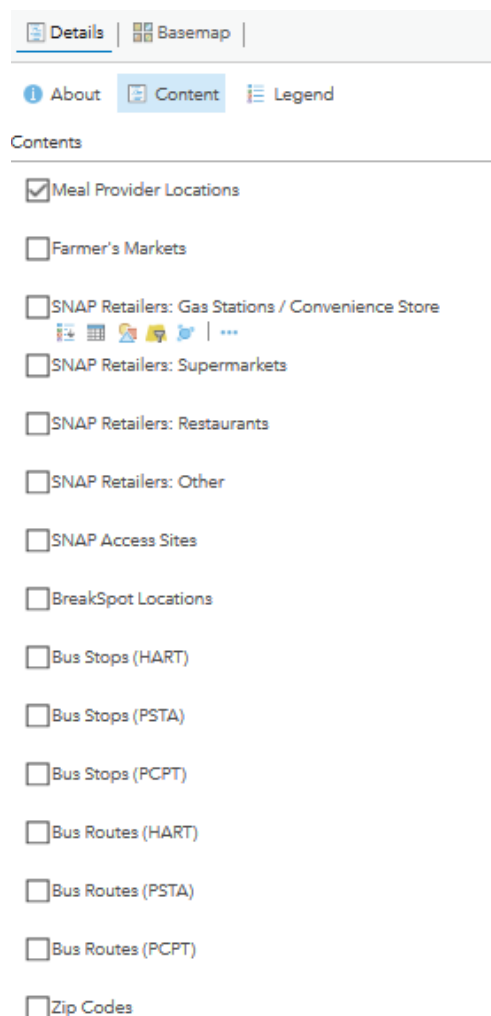
How to Move Around Map



Use +/- to
zoom in/out
of map.

Click and drag
the mouse to
move around
map.

Layer Definitions



Meal Provider Locations – Food Pantry, Prepared Meals, Weekend Bags, etc.

Farmer's Markets – Farmer's market locations

SNAP Retailers: Gas Stations – Gas station locations that accept SNAP

SNAP Retailers: Supermarkets – Supermarkets that accept SNAP/EBT

SNAP Retailers: Restaurants – Restaurants that accept SNAP/EBT

SNAP Retailers: Other – Any other retailer that accepts SNAP/EBT

SNAP Access Sites – Access site locations

Break Spot Locations – Total meals provided by summer feeding program in ZCTA

HART Bus Routes – Hillsborough County Bus Routes

PSTA Bus Routes – Pinellas County Bus Routes

PCPT Bus Routes – Pasco County Bus Routes

Zip Codes – Zip code

Layer Definitions (cont.)

- ☐ Zip Code Tabulation Areas / ZCTA (USCB)
- ☐ Food Deserts
- ☒ Meal Gap by Zip Code (ZCTA)
- ☐ Emergency Feeding Meals by Zip Code (ZCTA)
- ☐ Pack a Sack Meals by Zip Code (ZCTA)
- ☐ SNAP Meals by Zip Code (ZCTA)
- ☐ School Meals by Zip Code (ZCTA)
- ☐ BreakSpot Meals by Zip Code (ZCTA)
- ☐ WIC by Zip Code (ZCTA)
- ☐ Senior Meals by Zip Code (ZCTA)
- ☐ Mobile Pantry Meals by Zip Code (ZCTA)
- ☐ Missing Meals by Zip Code (ZCTA)
- ☐ Missing Meals by Census Tract (Feeding America)

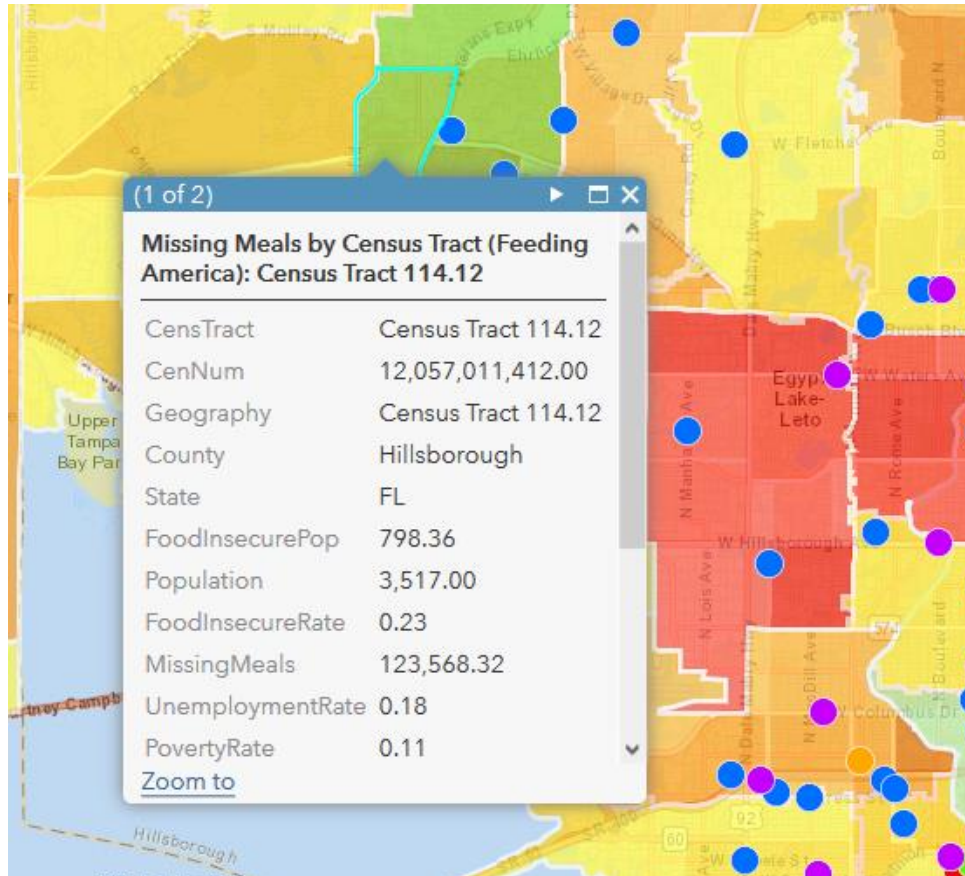
▲ Streets

World Street Map

***ZCTA** – Zip Code Tabulation Area = Zip Code data
used by US Census Bureau

Zip Code Tabulation Areas (USCB) – Zip Codes grouping by census tracts
Food Deserts - Geographic areas where residents' access to affordable, healthy food options are restricted/nonexistent due to absence of grocery stores within convenient traveling distance
Meal Gap by ZCTA – Total missing in ZCTA
Emergency Feeding Meals by ZCTA – Total emergency meals in ZCTA
Pack a Sack Meals by Zip Code – Total Pack a Sack Meals in ZCTA
SNAP Meals by ZCTA – Total SNAP meals in ZCTA
School Meals by ZCTA – Total free school meals in ZCTA
Break Spot Meals by Zip Code – Total Summer Break Spot Meals in ZCTA
WIC by ZCTA – Total WIC meals in ZCTA
Senior Meals by Zip Code – Total Senior Meals in ZCTA
Mobile Pantry Meals by Zip Code – Total mobile pantry meals by ZCTA
Missing Meals by Zip Code – Total amount of missing meals by ZCTA
Missing Meals by Census Tract – amount of missing meals in census tract

Census Tract Layer Definitions



CenTract – Census Tract is a geographic region defined for the purpose of taking a census; usually coincides with the limits of cities, towns

CenNum – Census number

County – County

FoodInsecurePop – number of individuals that are food insecure

Population – Population in area

FoodInsecureRate – Food Insecurity rate

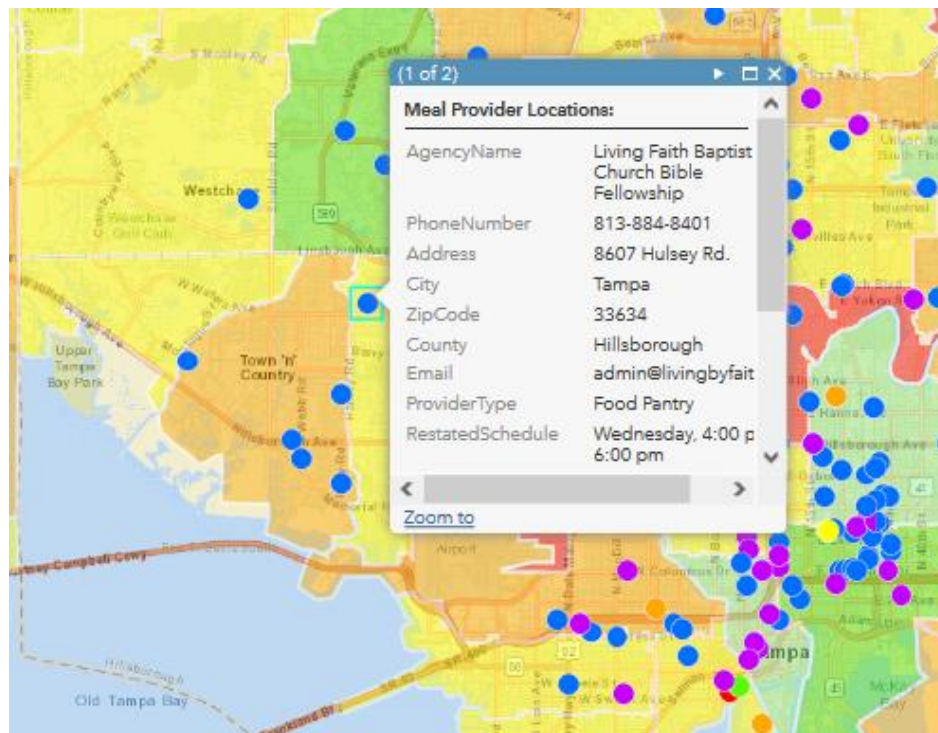
MissMeal – raw number of missing meals

UnemRate – Unemployment rate

PovRate – Poverty rate

Finding Food Pantries, Prepared Meals and Weekend Bags

To view Meal Provider information, scroll over a colored dot, then click to bring up detailed information.

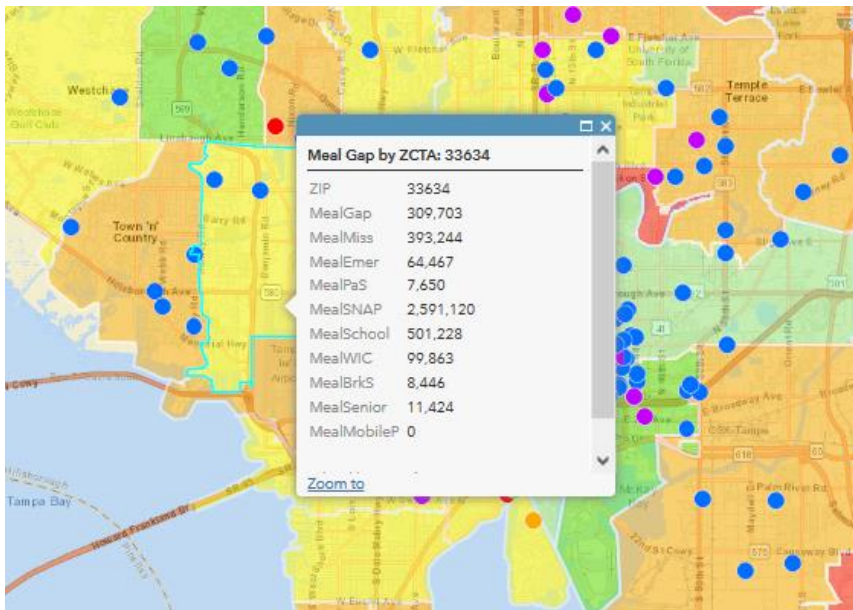


Colored Dots Key

-  Food Pantry
-  Prepared Meals
-  Food Preparation
-  Weekend Bags
-  After School
-  Group Home
-  Prepared Meals & Food Pantry
-  Pantry - Mobile
-  Mental Health Clinic

Meal Gap Layer

Click on a zip code, represented by a colored region, to bring up meal gap information.



Zip – Zip code

MealGap – total number of missing meals after taking into account available resources

MealMiss – total number of missing meals before taking into account resources available

MealEmer – total number of meals provided through the emergency feeding system (food pantries and hot meal providers)

MealPAS – total Pack-A-Sack meals

MealSNAP – total number of meals being provided by SNAP \$

MealSchool – total number of free meals provided by school system

MealWIC – total number of meals provided by WIC

MealBrkS – total number of meals provided by summer feeding program “Breakspot”

MealSenior- total number of meals provided by senior programs

MealMobileP- total number of mobile pantries in the area



Tampa Bay Network To End Hunger

Questions?

Please contact:

Ace.Padian@NetworkToEndHunger.org

(813) 344-5837

Thank you!

